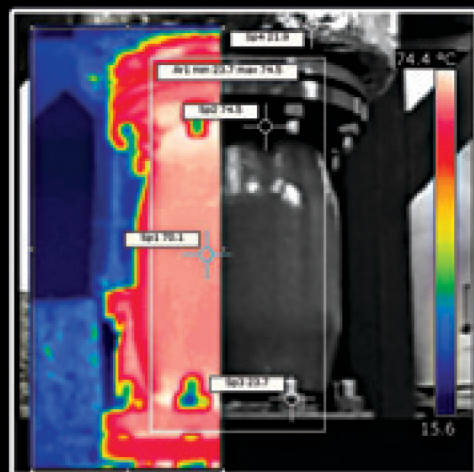
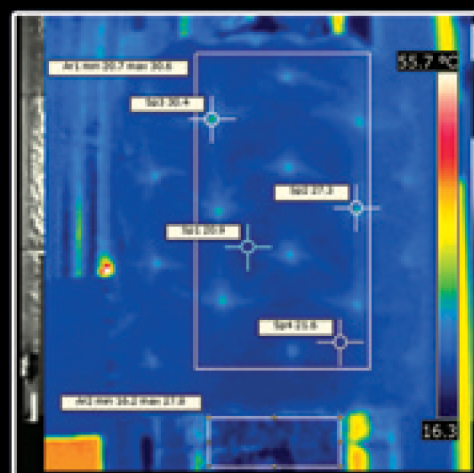
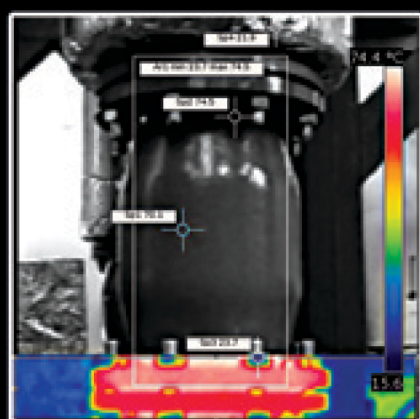


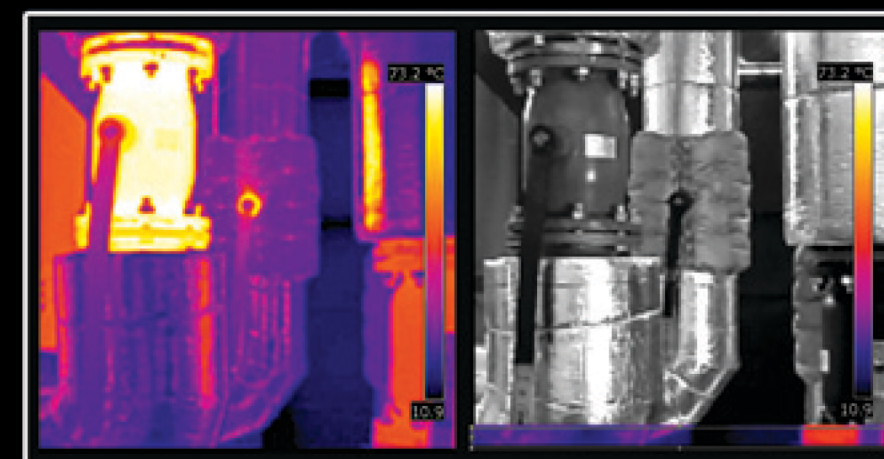
Our insulation mattresses and jackets



effectively restrict thermal losses



THERMOVISION REPORT



on insulation of heat distribution valves with the use of insulation mattresses produced by **IzoTech Service Sp. z o.o.**

Manufacturers of thermal insulations agree that it is recommended to use removable hoods as thermal insulation for the fittings. Losses of heat that occur on the fittings are significant event at low temperatures. Lack of insulation of DN 100 fittings at 100°C may result in almost as significant losses, as in the case of dozen meters of a pipeline.

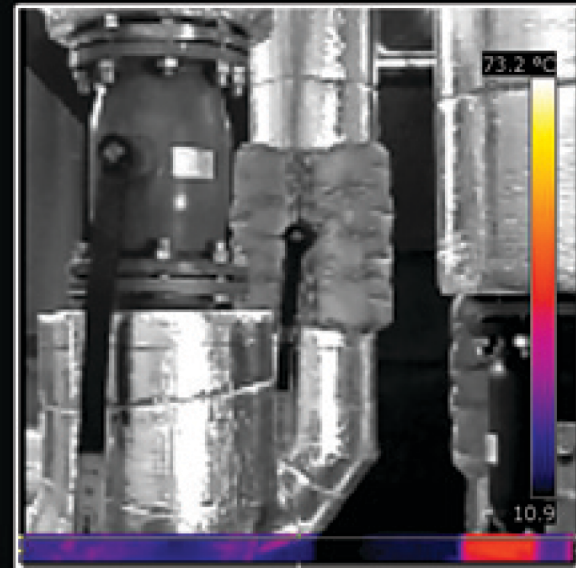
Our mattresses are ideal for any types of devices with irregular shapes, fitting pieces, flange connections etc. They are an alternative to costly flashings.

- ⊙ *Insulation of the fittings has never been so simple*
- ⊙ *Saving up has never been so easy*

Saving energy we care about the environment, and caring about the environment we care about ourselves.

Become our business partners Should you have any questions, do not hesitate to contact us!

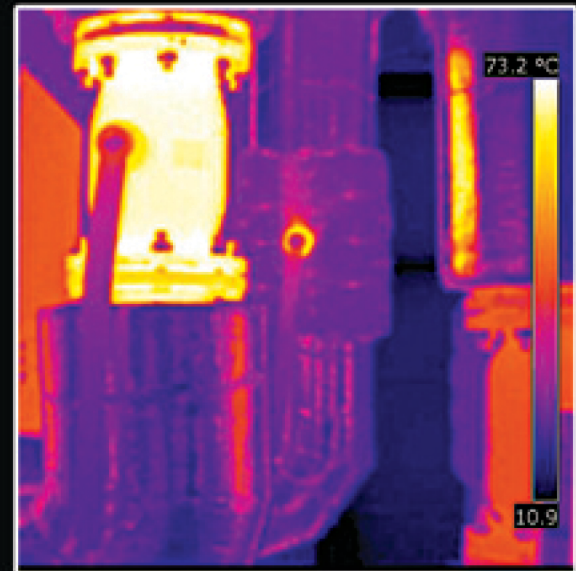




Dear All,

We are pleased to present the THERMOVISION REPORT on insulation of heat distribution valves with the use of insulation mattresses and jackets.

The aim of the test was to analyse efficiency of thermal insulation of our products installed on DN 150 valves used in thermal applications on feeding and return circuits of a heating system.

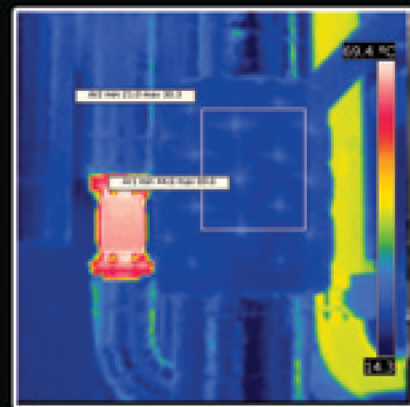
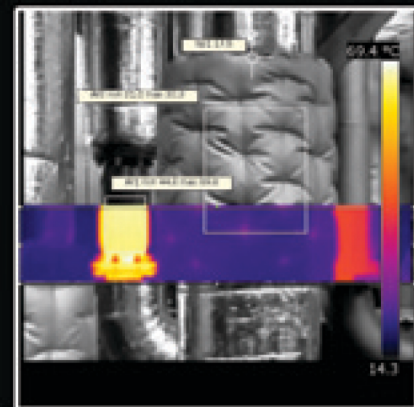


Internal conditions of the measuring room:

- Temperature: 21.5°C
- Humidity: 28%

Measuring equipment used:

- Thermal camera: FLIR b50, produced by FLIR SYSTEMS, serial number 399008140
- Temperature range: -20°C to +120°C,
- accuracy: +/-2°C/2%
- Humidity: 0-100%, accuracy +/-3%

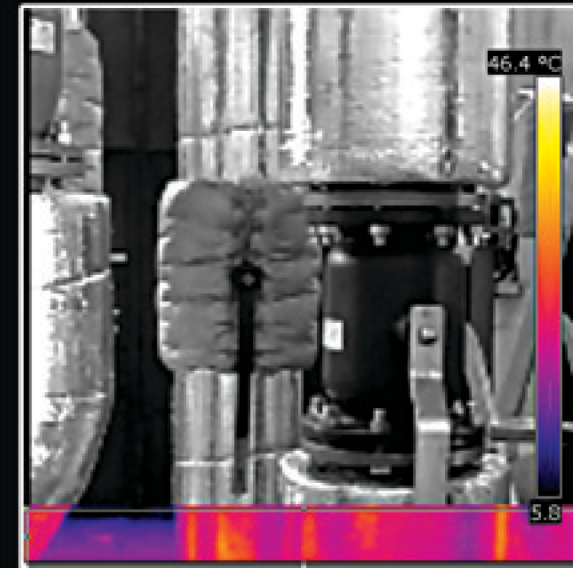


DN 150 valve, with easily removable insulation mattress, jacket installed on a feeding circuit of heat distribution network on the right side, and the same valve on a feeding circuit without insulation - on the left side.

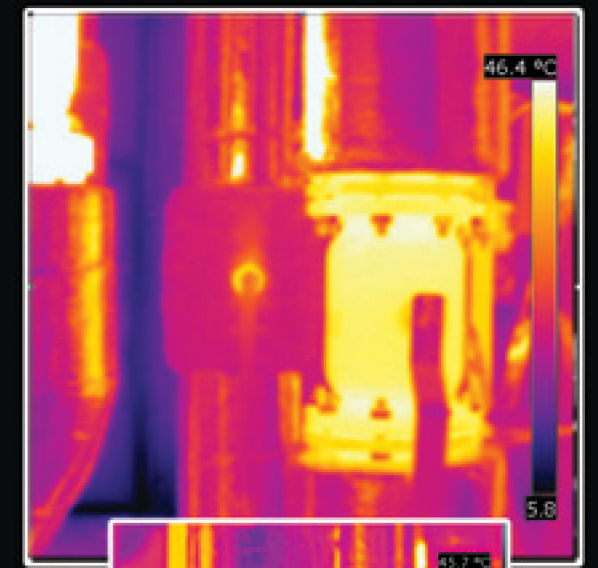


Insulation mattresses used:

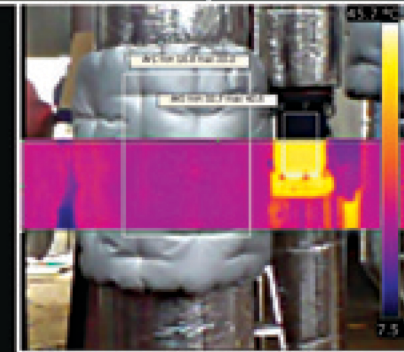
- Inner fabric: Temtex 420PG1
- Filling: Mat made of rock wool Paroc Wired Mat 80, thickness: 50mm.
- Outer fabric: Temtex 420SGI



DN 150 valve, with easily removable insulation mattress, jacket installed on a return circuit of the network

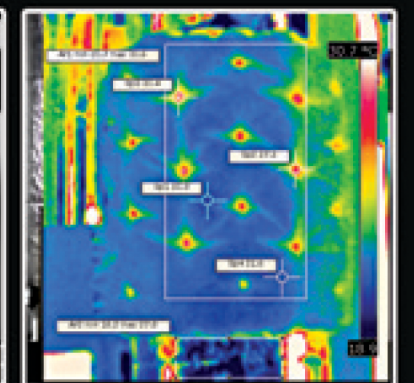
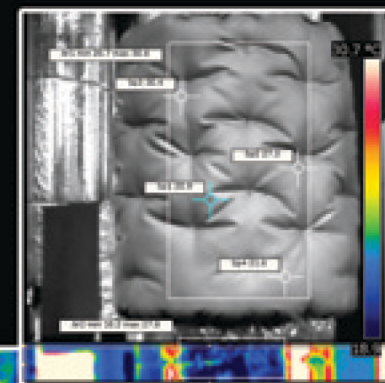


DN 150 valve on a return circuit, no insulation.

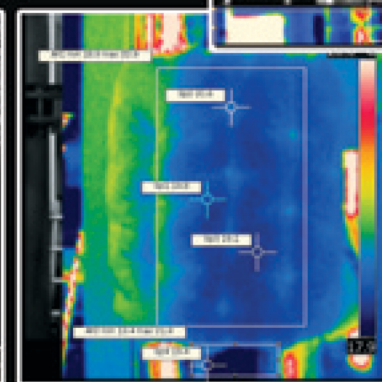
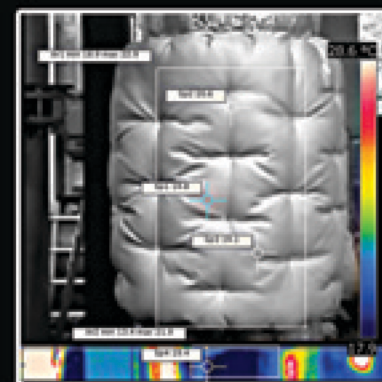


In order to keep the insulation in proper place inside the mattress, we quilt our products.

Please find below the thermograms showing the quilt.



DN 150 valve - feeding



DN 150 valve - return